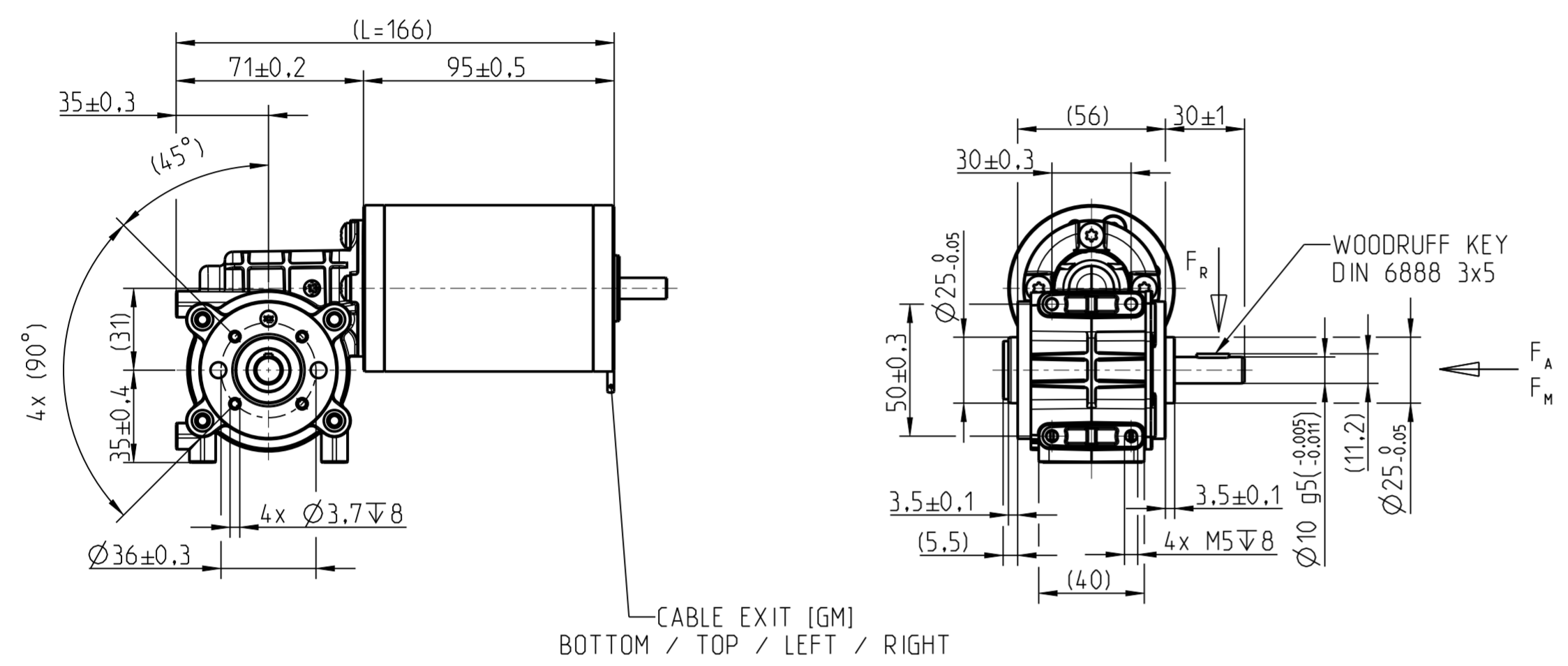
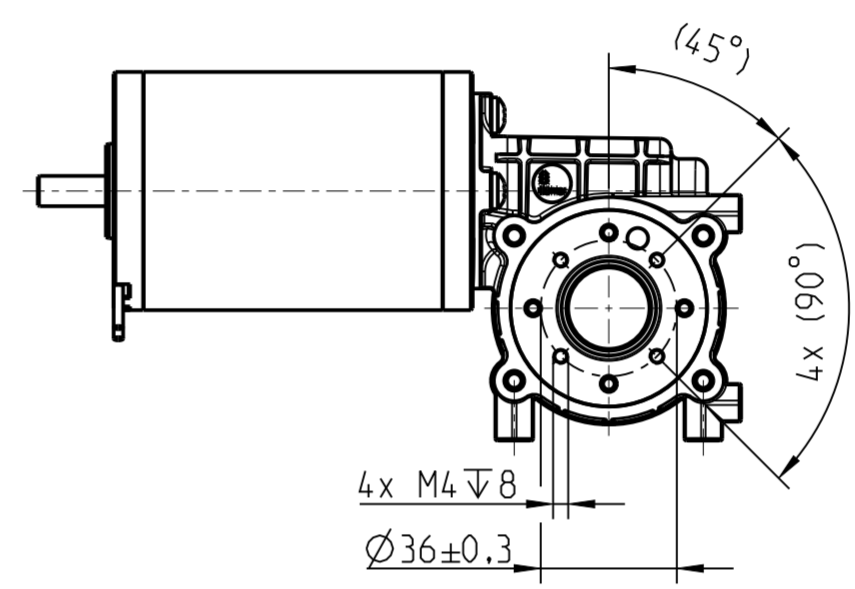
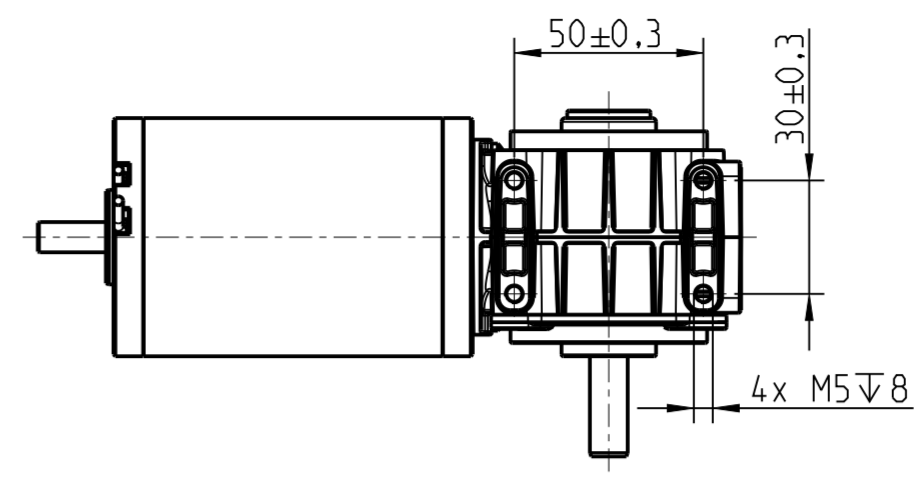


1	2	3	4	5	6	7	8	9	10	11	12
MATERIAL (STYLE)	RATIO i (CATALOG)	F_R	F_A	F_M	T_{MAX}						
METAL (GLOBOID)	5:1	300 N	100 N	100 N (UNSUPPORTED)	424 Ncm						
METAL (GLOBOID)	10:1				742 Ncm						
METAL (GLOBOID)	15:1				1081 Ncm						
METAL (GLOBOID)	30:1				1130 Ncm						
METAL (GLOBOID)	50:1				1000 Ncm						
METAL (GLOBOID)	75:1				800 Ncm						
PLASTIC (HELIX)	10:1 / 15:1					400 Ncm					

F_R - ALLOWED RADIAL FORCE MIDDLE OUTPUT SHAFT FROM MOUNTING SURFACE
 F_A - ALLOWED AXIAL FORCE
 F_M - ALLOWED MOUNTING FORCE FOR ADD-ON PARTS
 T_{MAX} - ALLOWED TORQUE



WOODRUFF KEY
DIN 6888 3x5

Wenigste Menge sowie Verwertbarkeit dieses Dokuments, Verwertung und Weiterverbreitung ohne schriftliche Genehmigung der Brehl Group sind ausdrücklich untersagt. Alle Rechte für den Fall der Patent-, Gebrauchsmuster- oder Geschmacksmerkmalrechte vorbehalten.

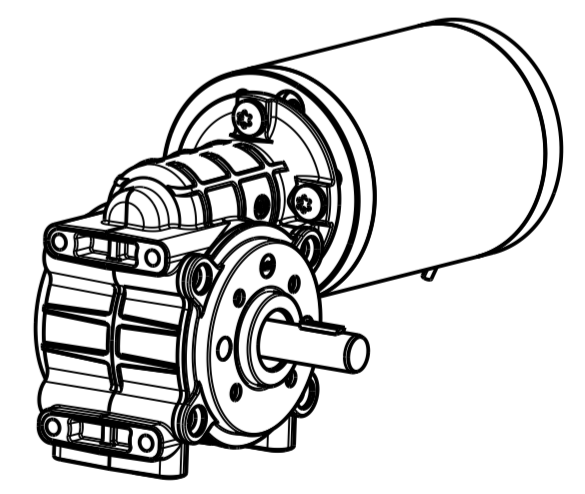
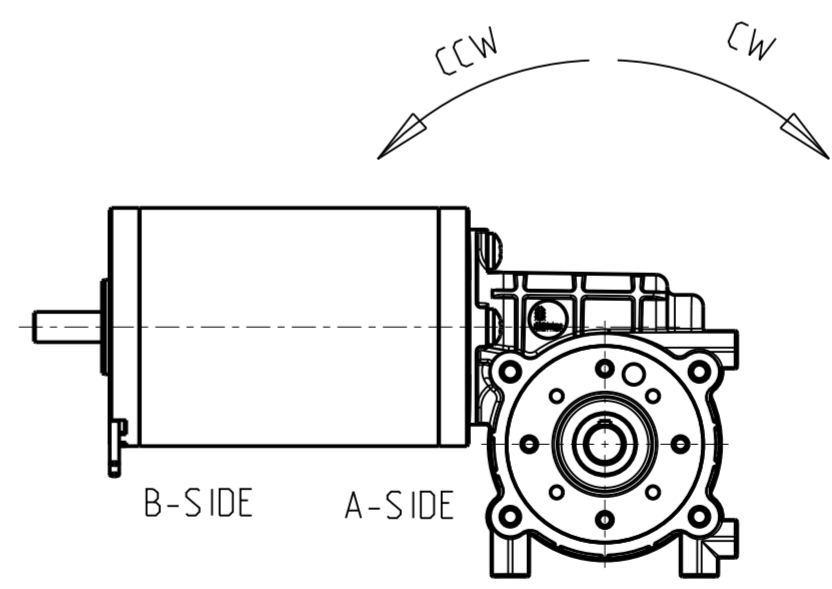
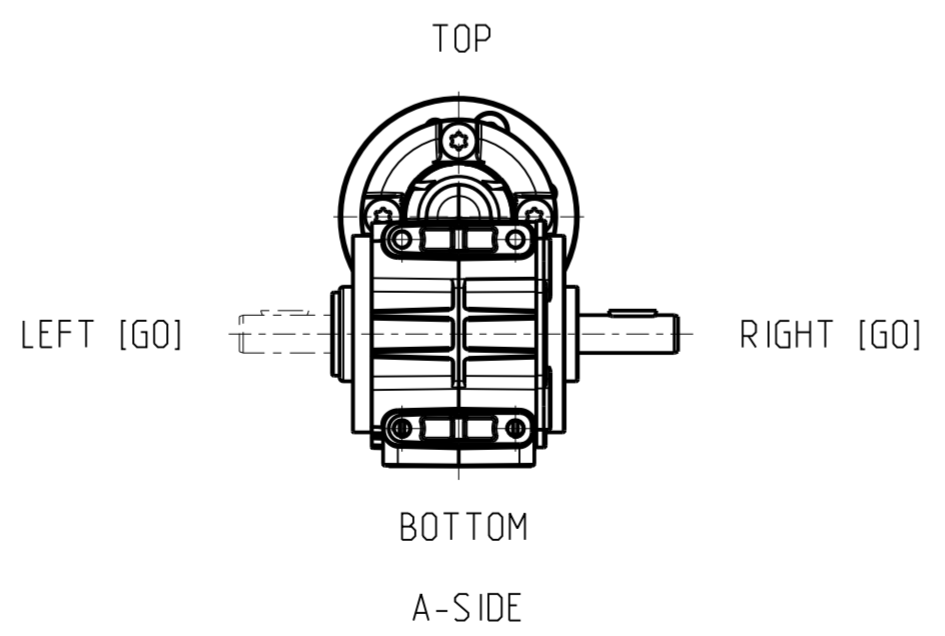
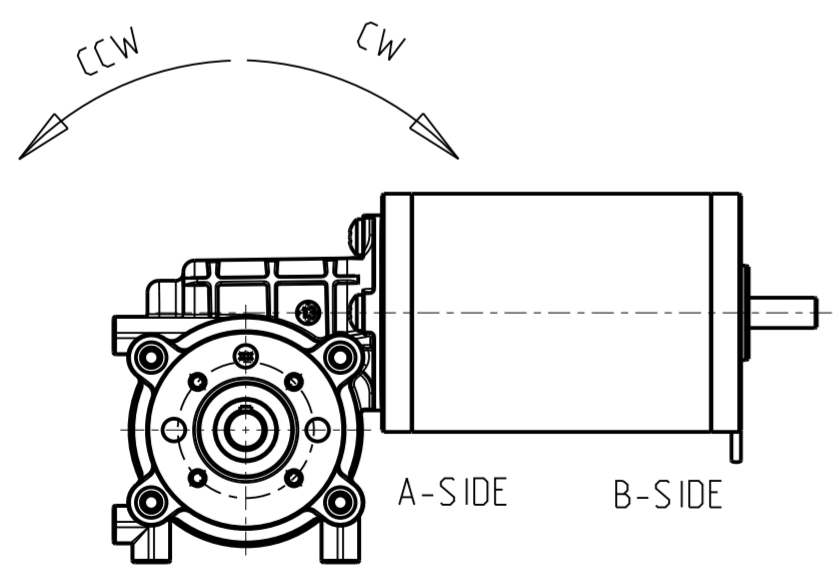
FIRST ANGLE PROJECTION
Projektionsmethode 1

THE REPRODUCTION, DISTRIBUTION AND UTILIZATION OF THIS DOCUMENT AS WELL AS THE CONSTRUCTION OF IDENTICAL OR SIMILAR DEVICES WITHOUT THE WRITTEN PERMISSION OF BÜHLER IS PROHIBITED. OFFENDERS WILL BE HELD LIABLE FOR THE PAYMENT OF DAMAGES. ALL RIGHTS RESERVED IN THE EVENT OF THE GRANT OF A PATENT, UTILITY MODEL OR DESIGN.

DIRECTION OF GEARBOX SHAFT ROTATION FOR RIGHT SHAFT [GO]

GEARBOX SHAFT ORIENTATION [GO]

DIRECTION OF GEARBOX SHAFT ROTATION FOR LEFT SHAFT [GO]



GENERAL TOLERANCES		MATERIAL		WT-PART NUMBER	
-		WORMGEAR WG31		13000596	
TOLERANCING				CREATED	
ISO 8015				M.Semmlinger	
THEORETICAL MASS		CHANGE DESCRIPTION		CHANGE NUMBER	
(231.32 g)		0x ② EDITORIAL CHANGES		APPROVED	
SCALE		SIZE		PREVIOUS VERSION	
1:2		DIN A2		-	
Bühler Motor		Bühler		DOCUMENT STATE	
		TITLE		DOCUMENT REVISION	
		bMotion		13001984 2	
		PMDC 63x95		DATE OF ISSUE SHEET	
				2024-05-21 4/10	
DIMENSIONS IN mm		ENGLISH WORDING IS BINDING		ASSEM. DRAWING	