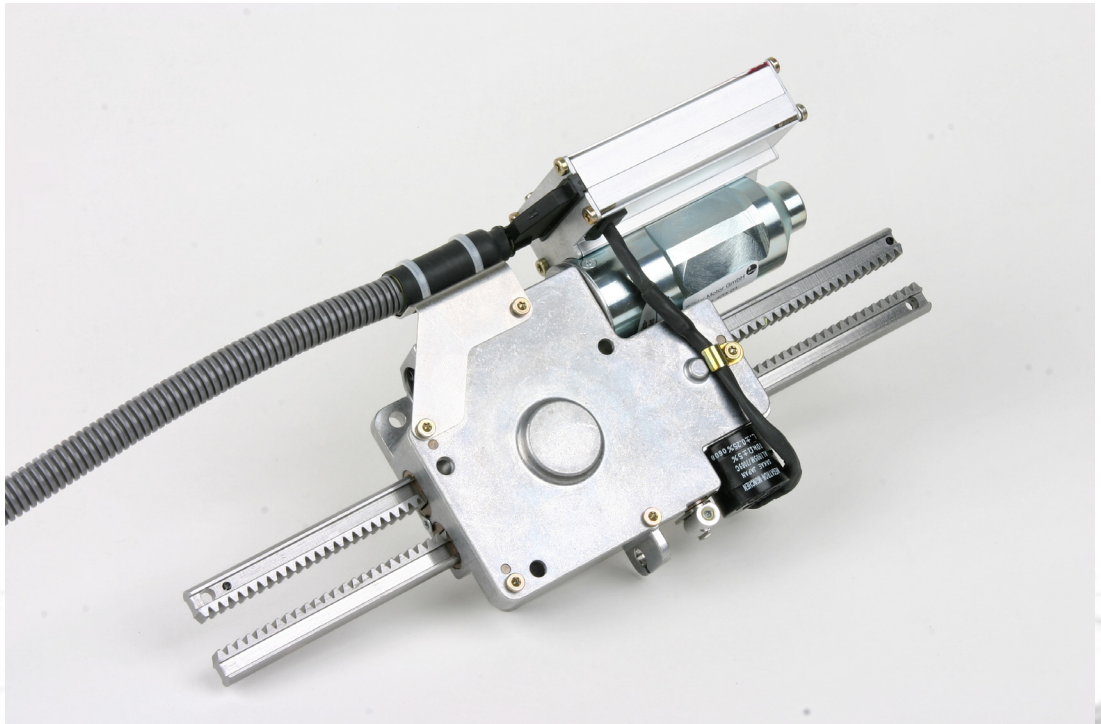


# Compact Double Rack Actuator 1.61.099.2XX



## Product Description

The Compact Double Rack Actuator 1.61.099.2XX is an electro-mechanical actuation system designed to actuate the legrest extension function in First Class and Business Class seats in commercial aircraft but is of course not limited to that kind of application. Performance is our driver. During the development we have designed an outstanding product in terms of

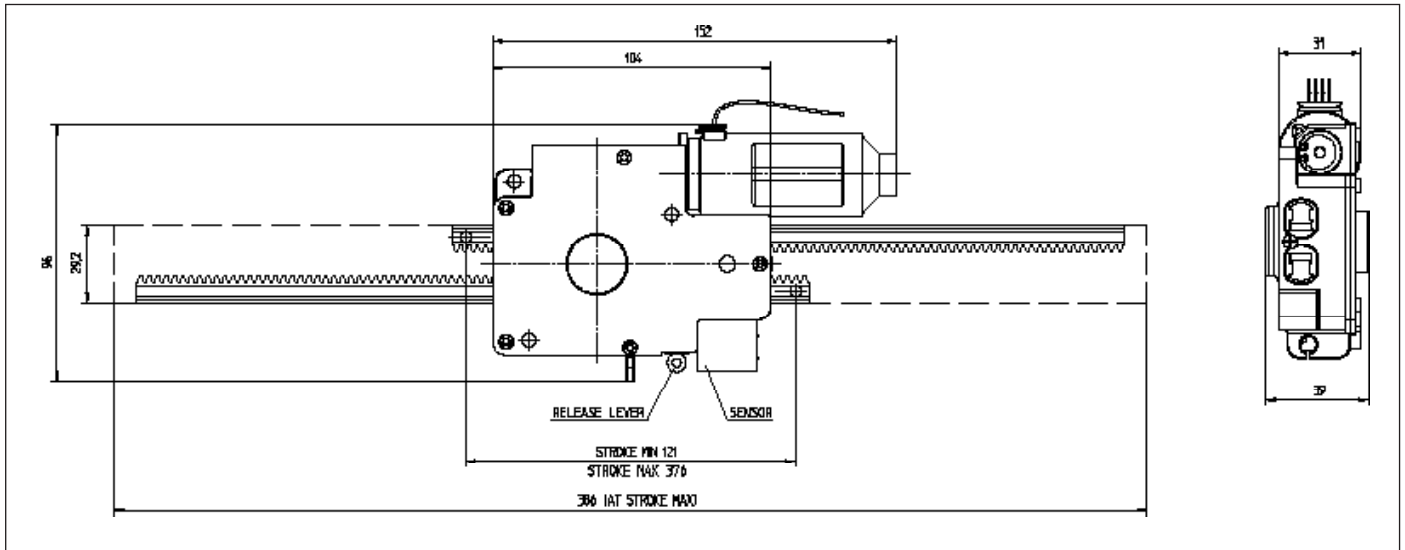
- Reliability
- Simplicity in operation and maintenance
- Light weight
- Low power consumption
- Low noise level
- Compact and modular design

The actuator family meets all applicable specifications from Airbus and Boeing.

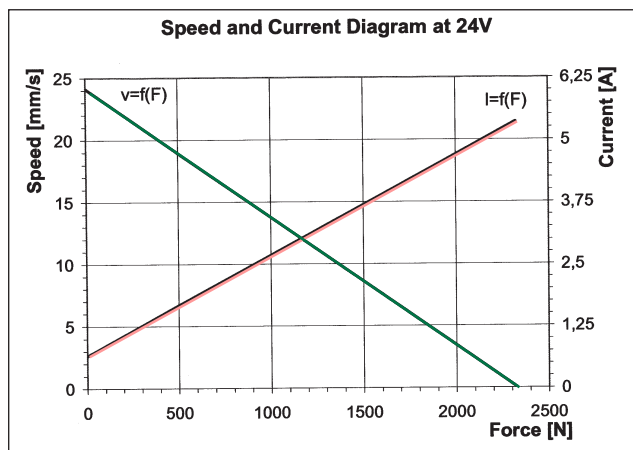
We focused standardization and optimization of components to provide the best quality to price ratio and to help you to keep your products competitive. In addition the modular philosophy allows us to create highly flexible solutions fitting your special needs in only a short period of time.

For more complete information please refer to the technical details on the reverse side.

# Compact Double Rack Actuator 1.61.099.2XX



all dimensions in mm



Nominal force: 33% of stall force  
higher force for a short time possible

## Further design features

- position control feedback with integrated potentiometer
- patented combination of planetary gear and worm gear with integrated manual override function
- rare earth magnet motor
- self locking capability
- variable mechanical interfaces

## General Characteristics

Features	Metric measure	American/British measure
Operating voltage	24 V	24 V
Operating load	580 N	130 lbf
Operating speed	16 mm/s	0.63 in/s
Operating current	2.2 A	2.2 A
Peak operating load	1160 N	260 lbf
Ultimate static load	2250 N	500 lbf
Noise level**	50 dBA	50 dBA
Stroke capability*	121 mm to 376 mm	4.7 in to 14.8 in
Temperature range***	-40 °C to 70 °C	-40 F to 148 F
Weight*	800 g	1.76 lb

\* with 250 mm steering rack, other strokes available on request

\*\* distance microphone 0.5 meter

\*\*\* Temperature capability, according test category RTCA/D0-160E, Section 4