

DC Gear Motor

1.61.070.XXX

Type 1.61.070.XXX

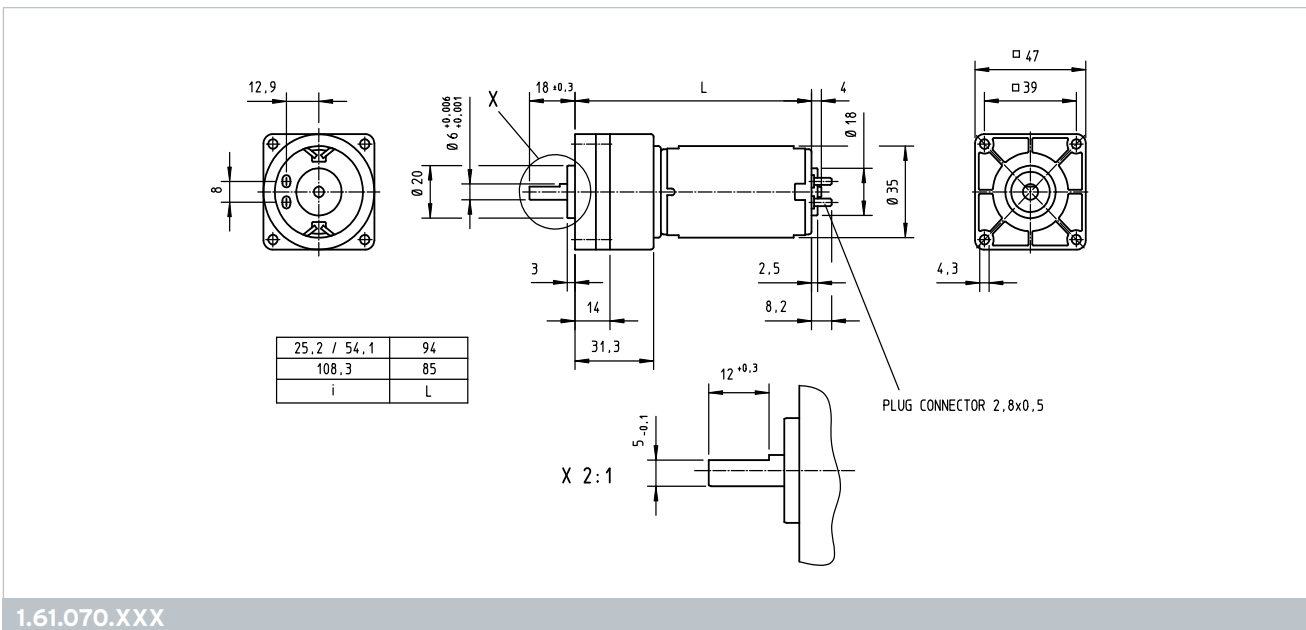
V =	XXX	Characteristics*				max.	Terminal	Stages	Gear
		Rated current	Rated torque	Rated speed	No load speed	Torque*	resistance		ratio
		I_N / A	T_N / mNm	n_N / rpm	n_o / rpm	T_{max} / mNm	R_a / Ω		
12 V	304	1.400	650	103	150	910	2.7	N/A	25.2
	305	1.400	1300	53	71	1820	2.7	N/A	54.1
	306	1.050	1300	28	39	1820	4.2	N/A	108.3
24 V	324	0.720	650	103	150	910	12	N/A	25.2
	325	0.700	1300	53	71	1820	12	N/A	54.1
	326	0.500	1300	28	39	1820	18	N/A	108.3

Operational conditions

Temperature range	T	°C	-10 - +70
Axial force	F_A	N	8
Radial force, 5 mm from mounting surface	F_R	N	40

* at 25° C

Design	
Weight	220 g
Gear housing	Plastic
Commutator	Copper / 8-segments
RFI protection	2 chokes
Insulation class	Winding H, otherwise A
Protection class	IP40
Commutation	carbon brushes
Armature	straight slot
Magnet system	Permanent magnets, 2-pole
Bearings	2 sintered bronze bearings
Motor housing	Steel, corrosion protected
Motor end shields	zinc die-cast on both sides
Wolfram gear	Plastic gears
Axial play output shaft	0.05 - 0.6 mm



Customized versions

The following modifications are available upon request:

- ▶ Encoder possible
- ▶ Internal chokes and/or capacitors
- ▶ Speed adjustment by winding change
- ▶ Addition of wire harnesses
- ▶ Modification of shaft length
- ▶ Modification of shaft configuration (flat, groove, etc.)
- ▶ Assembly of gears, pinions, etc.
- ▶ Assembly of adapters and mounting plates